

# STRUCTURAL MODULARS, INC.

## The Clifford



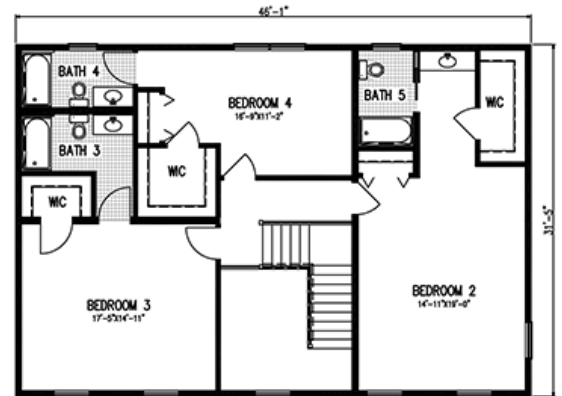
**TWO-STORY**  
**4172 SQ FT**  
**4 Bedrooms**  
**4 Full Baths, 1 Half Bath**  
**Fireplace**  
**Utility Room**

**Overview:** Space abounds in the Clifford. The sprawling first floor includes an open foyer; massive living and family rooms, featuring pocket doors that offer the flexibility to create open spaces or private retreats; a grand gourmet kitchen with vaulted ceiling, center island, and breakfast nook; formal dining room; and utility room. The romantic master suite features a corner fireplace, a spacious master bath with garden tub and separate shower, and an exceptional walk-in closet. The second level offers three additional generous bedrooms, walk-in closets and full baths.

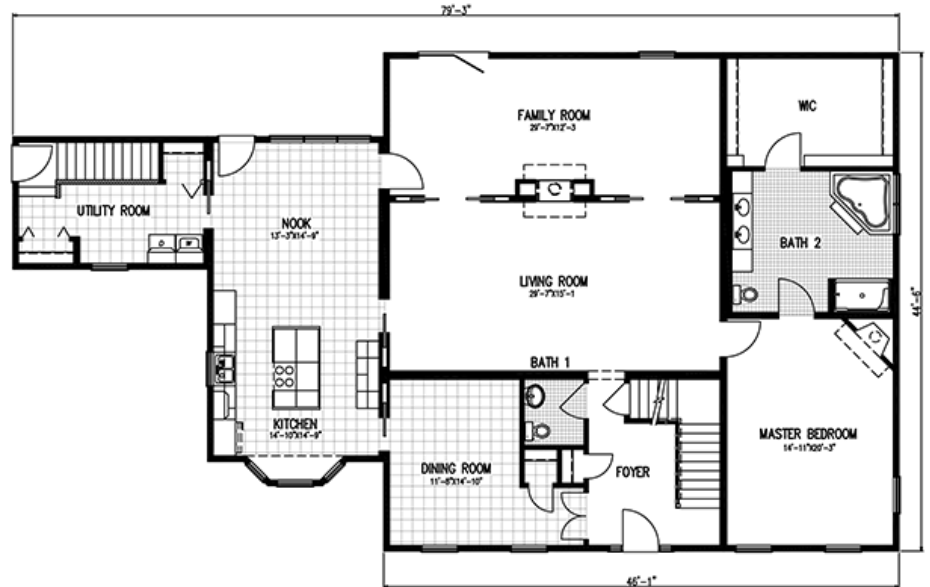
**Notes:** All floor plans can be customized to fit your needs. We design and construct the modular to your specifications.

Elevations may include additional builder construction such as porches, garages, decks, etc.

**Structural Modulars, Inc.**  
101 Southern Avenue  
P.O. Box 315  
Strattanville, PA 16258  
Phone: 800.216.7849  
Fax: 814.764.5852  
E-mail: info@smihomes.com



2ND FLOOR— 1472 SQ FT



1ST FLOOR— 2700 SQ FT