

STRUCTURAL MODULARS, INC.

The Tionesta



CAPE COD

672 SQ FT – 1st floor
170 SQ FT – 2nd floor

Galley Kitchen
1 Bedroom
1 Full Bath
Optional Loft

Overview:

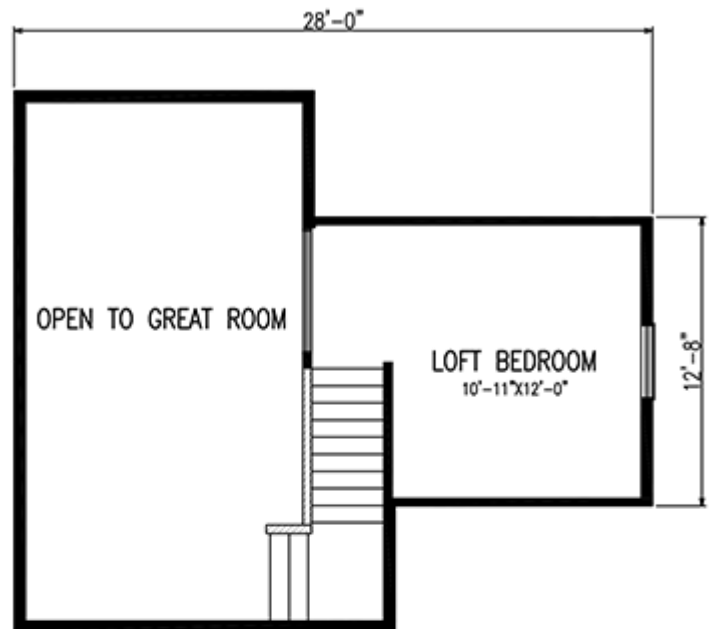
Perfect for those who want to downsize or someone just starting out that enjoys the life of a minimalist. Quick thought. Remove the two windows near the kitchen, add a fireplace with bookshelves on either side and watch the snow fall from the front windows. Add a wrap around porch and enjoy the cool breeze on a summer's evening.

Notes:

All floor plans can be customized to fit your needs. We design and construct the modular to your specifications. Elevations may include additional builder construction such as porches, garages, decks, etc.

Structural Modulares, Inc.

101 Southern Avenue
P.O. Box 315
Strattanville, PA 16258
Phone: 800.216.7849
Fax: 814.764.5852
E-mail: info@smihomes.com



OPTIONAL 2ND FLOOR-170 SQ FT

